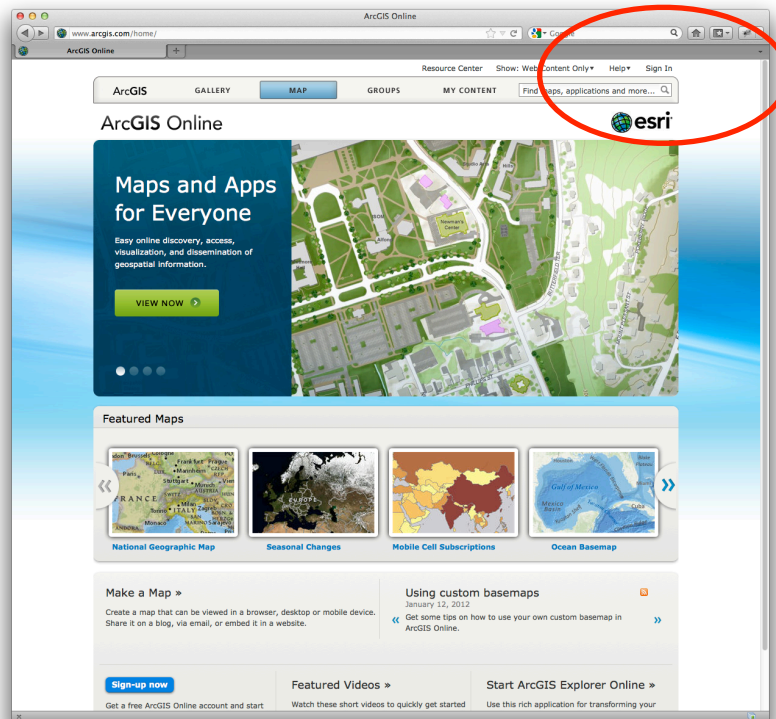


WebGIS Tutorial

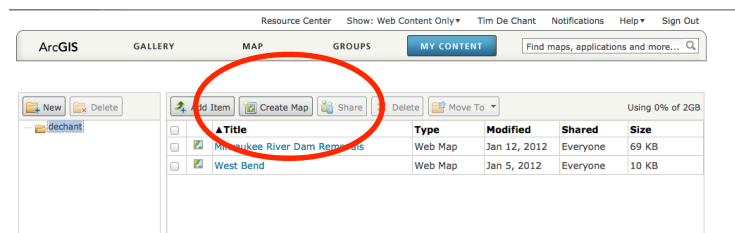
by [Tim De Chant](#)
ScienceOnline 2013

In this tutorial, you'll help tell the story of the removal of the Woolen Mills dam in West Bend, Wisconsin. In the process, you'll learn how to create a map on a webGIS site, add point and vector layers, add layer attributes, and publish the map.

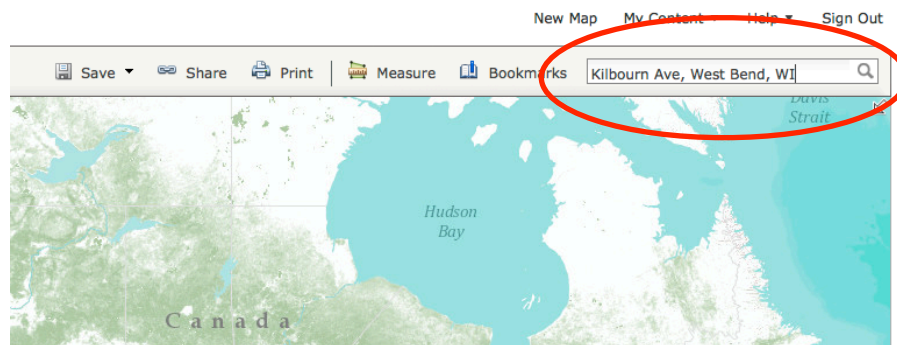
1. Point your web browser to <http://www.arcgis.com/home/index.html>.
2. Sign up for an account by clicking **Sign In** then **Create a Personal Account**.



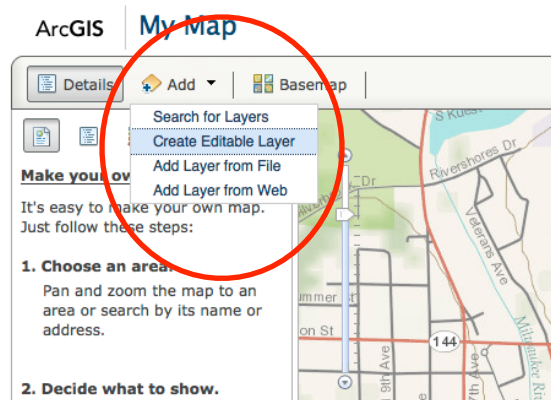
3. Create a new map.



4. Search for **Kilbourn Ave. West Bend, WI** in the search box in the upper right.

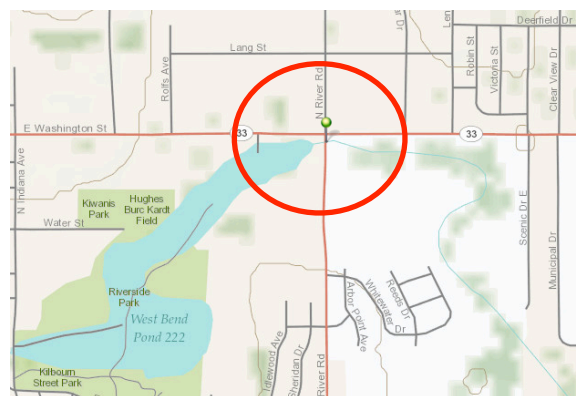


5. Create an editable layer by selecting **Add** then **Create Editable Layer**.



Name the layer whatever you like (e.g. Woolen Mills dam) and leave the **Template** type as **Map Notes** (this is an all-purpose template).

6. Add a **Stickpin** where the Milwaukee River passes under River Rd. (near the intersection of River Rd. and Highway 33/E. Washington St.).



7. **Add attributes** to the stickpin point.

- a. In the resulting pop-up window, name the point **Woolen Mills dam** and add **Removed in 1988** as the description.
- b. Make “Removed in 1988” a **hyperlink** to the newspaper article about the dam’s removal:

Open this link in your browser and copy the URL:

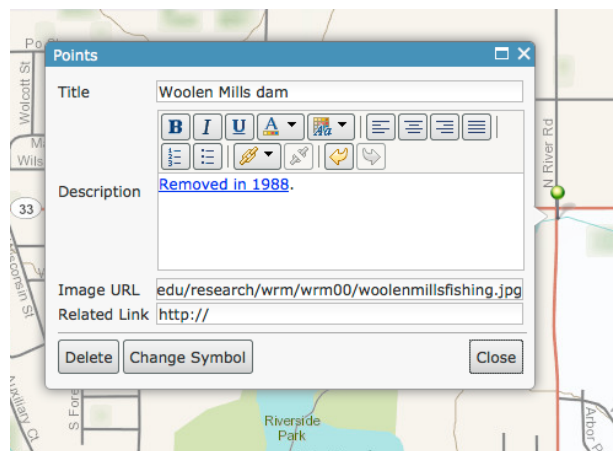
[Milwaukee Journal article on Woolen Mills dam removal](#)

Select “Removed in 1988”, **click the link icon**, and **paste the URL**.

- c. Add this image URL:

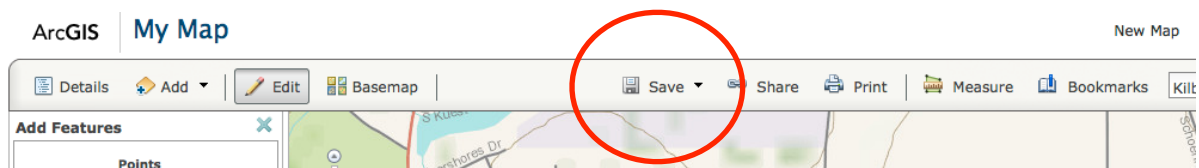
<http://www.nelson.wisc.edu/research/wrm/wrm00/woolenmillsfishing.jpg>

- d. When finished, your attribute window should look like this:



If your window looks like this, press close.

8. **Save your map.**

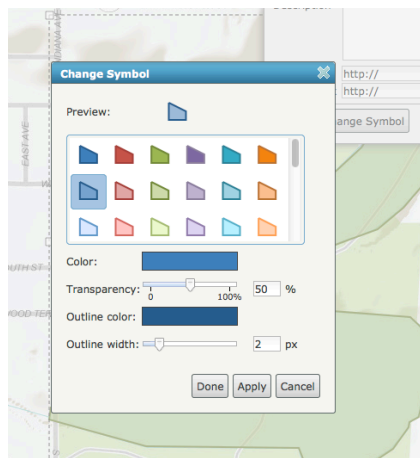


Enter a title and any tags you’d like to associate with it (tags are required).

9. Delineate the old Woolen Mills dam impoundment.
 - a. Select the **Area tool** from the **Add Features** toolbox. (If it disappeared, press the **Edit button** in the toolbar.)
 - b. Outline the old pond. If you don't see the old pond, switch to the Base Map to Topographic. To complete the feature, double click.

Note: If you're unhappy with any part of your feature, just keep going and complete it. You can edit the feature once it is complete by double-clicking it and dragging the vertices.

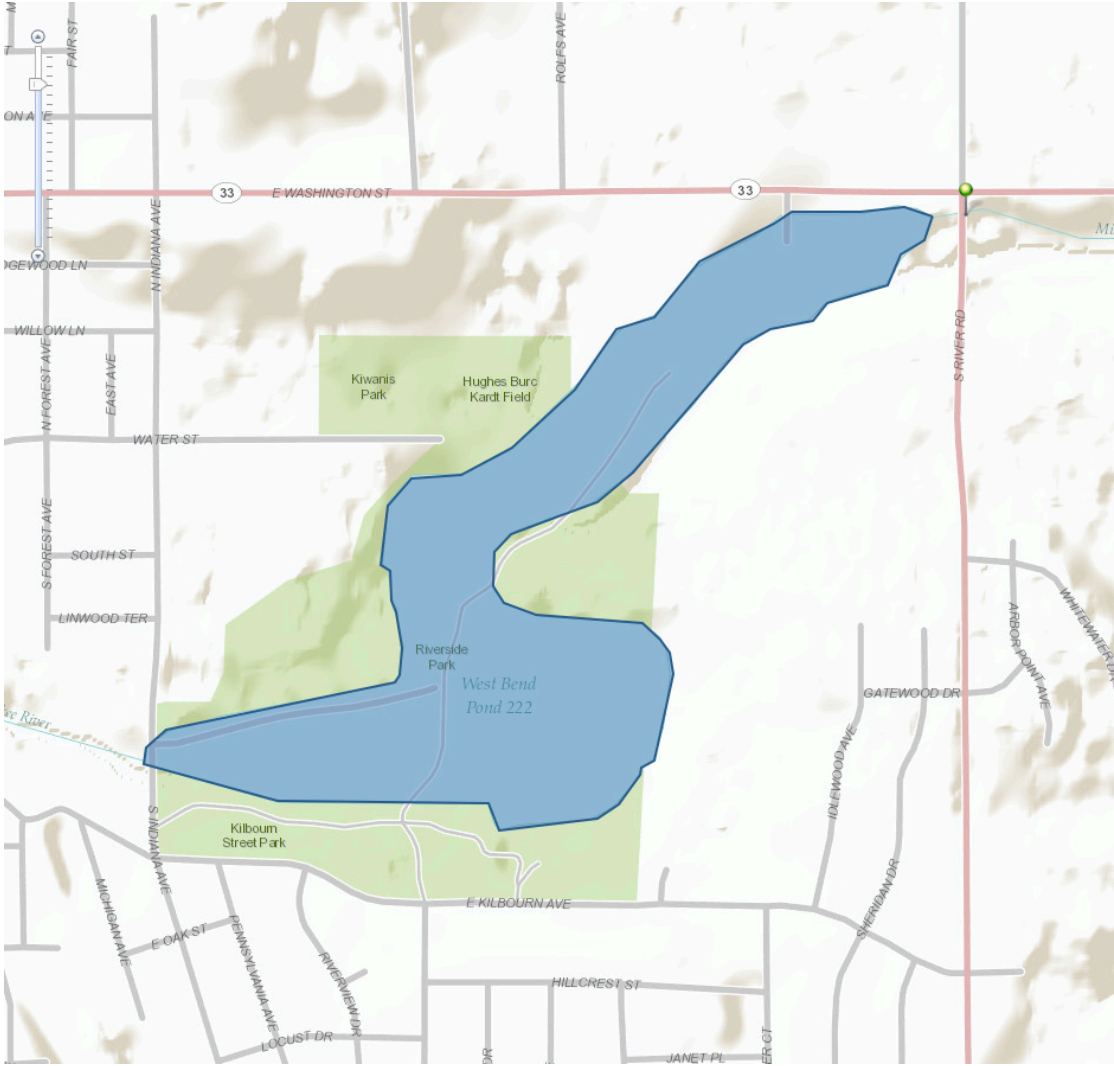
- c. Name the feature **Woolen Mills dam impoundment**.
- d. **Change the symbol** to a transparent blue with a blue outline.



Press **Done** to apply the changes and close the attribute window.

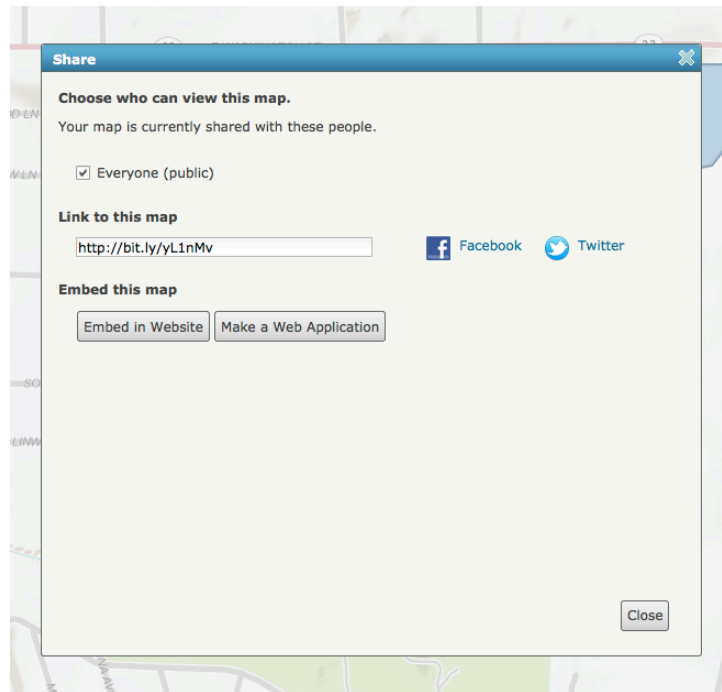
10. Save your progress.

11. At this point, your map should look something like this:



People viewing your map can click on the stickpin to see more information, including the photo we linked to and the newspaper article about the dam's removal.

12. Share your map by pressing the **Share** button in the toolbar. Make it available to everyone by checking the appropriate box.



Web app

To make the map a stand-alone address, press “Make a Web Application”. You can either host it with ArcGIS.com or download the code to upload to your own web host.

Embed in another site or blog

ArcGIS.com maps can also be embedded in blog posts. Simply press “Embed in Website” and copy and paste the code into your blog’s HTML post editor.

Note: To embed a map, you need to be able to include <iframe> elements in your posts. Wordpress.com, for example, won’t allow that.